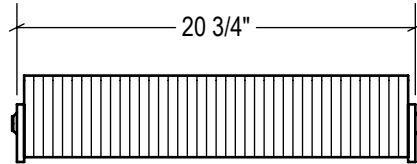
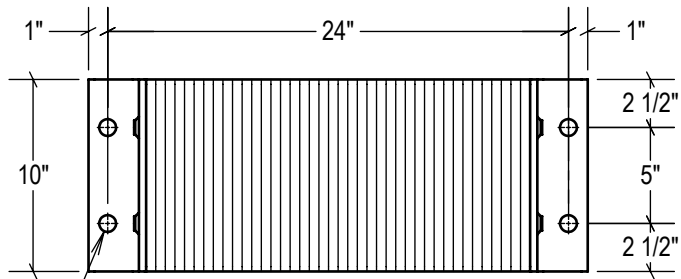


P1 CONFIG.

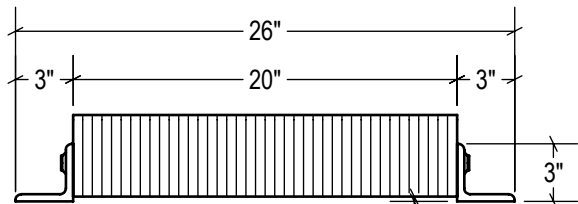


P2 CONFIG.

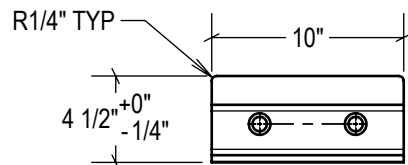


TOP VIEW

Ø 7/8" TYP

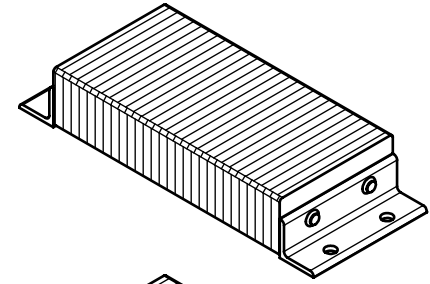


FRONT VIEW

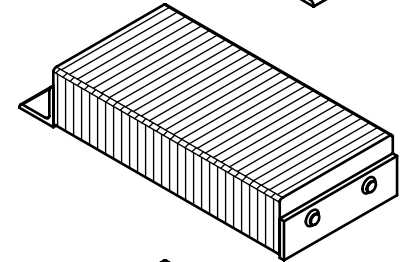


SIDE VIEW

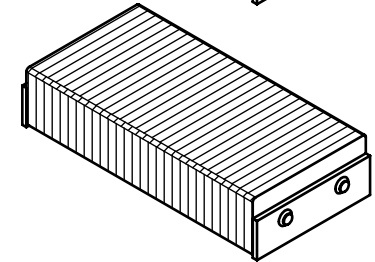
STANDARD
model #: LB410-24
part #: 24-1053
Bolted (2) Sides



P1 CONFIG.
model #: LB410-24/P1
part #: 24-1054
Welded (1) Side



P2 CONFIG.
model #: LB410-24/P2
part #: 24-1055
Welded (2) Sides



ESTIMATED GROSS SHIPPING WEIGHT = 51 LBS

SPECIFICATIONS:
FURNISH AND INSTALL LAMINATED RUBBER DOCK BUMPERS AS MANUFACTURED BY IDEAL WAREHOUSE INNOVATIONS, INC. LAMINATED PADS SHALL BE MADE FROM REINFORCED TRUCK TIRES CUT TO 4.125" x 10" PUNCHED AND ASSEMBLED THROUGH 3/4" RODS BETWEEN 3" x 3" x 3/8" STRUCTURAL STEEL UNDER 1, 500LBS OF PRESSURE. FINISH OF EXPOSED METAL SHALL BE PAINTED WITH WATER-BASED AND LEAD-FREE PAINT OR HOT-DIPPED GALVANIZED (OPTIONAL).

ALL DIMENSIONS ARE ± 1/8" UNLESS SPECIFIED OTHERWISE

DRAWN BY: **T.CHUNG** DATE: **2018-12-12**
CHECKED BY: DATE:

THE INFORMATION CONTAINED IN THIS DRAWING IS THE SOLE PROPERTY OF IDEAL WAREHOUSE INNOVATIONS INC. ANY REPRODUCTION IN PART OR AS A WHOLE IS PROHIBITED.

3rd Angle	SIZE: A	
	IDEAL WAREHOUSE INNOVATIONS INC	

DESCRIPTION:
LAMINATED RUBBER BUMPER LB410-24

SCALE: 1:10	SHEETS: 1 of 1	DRAWING NUMBER: MKT_LB410-24	REV: 1
-----------------------	--------------------------	--	------------------