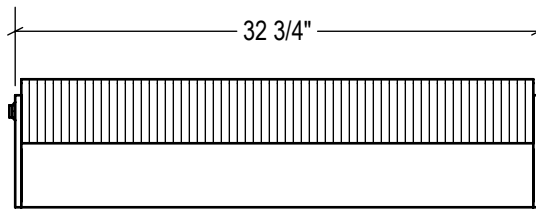
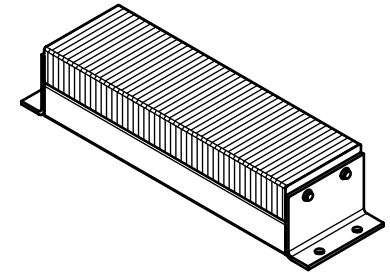


P1 CONFIG.

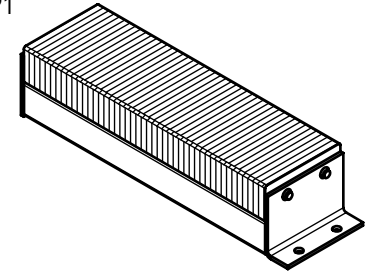


P2 CONFIG.

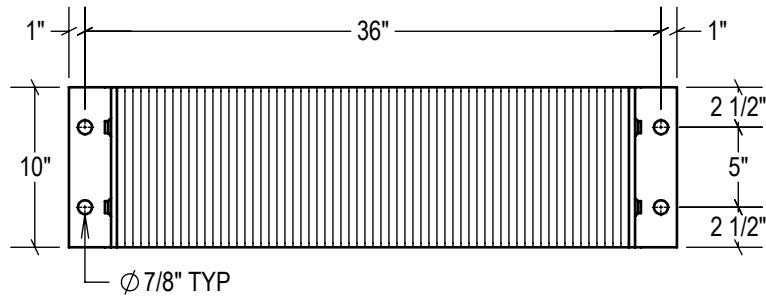
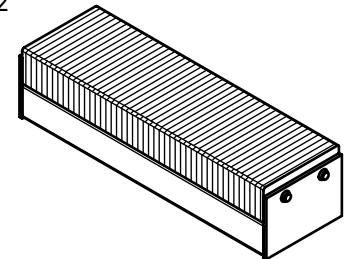
STANDARD
model #: LB810-36
part #: 24-2997
Bolted (2) Sides



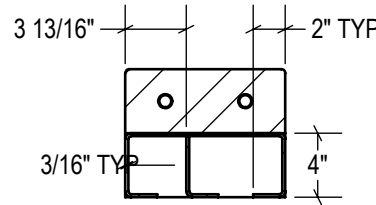
P1 CONFIG.
model #: LB810-36/P1
part #: 24-2998
Welded (1) Side



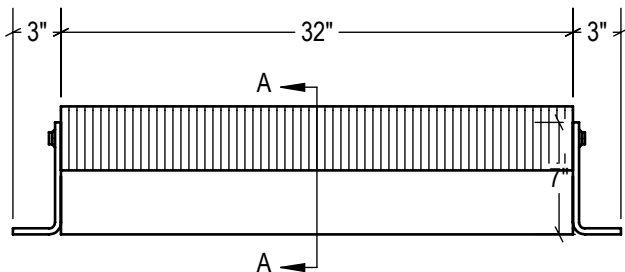
P2 CONFIG.
model #: LB810-36/P2
part #: 24-2999
Welded (2) Sides



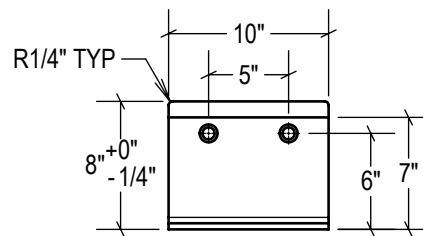
TOP VIEW



SECTION A-A



FRONT VIEW



SIDE VIEW

ESTIMATED GROSS SHIPPING WEIGHT = 124 LBS

SPECIFICATIONS:

FURNISH AND INSTALL LAMINATED RUBBER DOCK BUMPERS AS MANUFACTURED BY IDEAL WAREHOUSE INNOVATIONS, INC. LAMINATED PADS SHALL BE MADE FROM REINFORCED TRUCK TIRES CUT TO 4.125" x 10" PUNCHED AND ASSEMBLED THROUGH 3/4" RODS BETWEEN FORMED 3/8" THICK STEEL UNDER 1,500LBS OF PRESSURE. FINISH OF EXPOSED METAL SHALL BE PAINTED WITH WATER-BASED AND LEAD-FREE PAINT OR HOT-DIPPED GALVANIZED (OPTIONAL).

ALL DIMENSIONS ARE ± 1/8" UNLESS SPECIFIED OTHERWISE

DRAWN BY:

T.CHUNG

DATE:

2018-12-12

CHECKED BY:

DATE:

THE INFORMATION CONTAINED IN THIS DRAWING IS THE SOLE PROPERTY OF IDEAL WAREHOUSE INNOVATIONS INC. ANY REPRODUCTION IN PART OR AS A WHOLE IS PROHIBITED.



3rd Angle

SIZE:

A



IDEAL WAREHOUSE INNOVATIONS INC

DESCRIPTION:
LAMINATED RUBBER BUMPER LB810-36

SCALE: 1:12	SHEETS: 1 of 1	DRAWING NUMBER: MKT_LB810-36	REV: 1
-----------------------	--------------------------	--	------------------