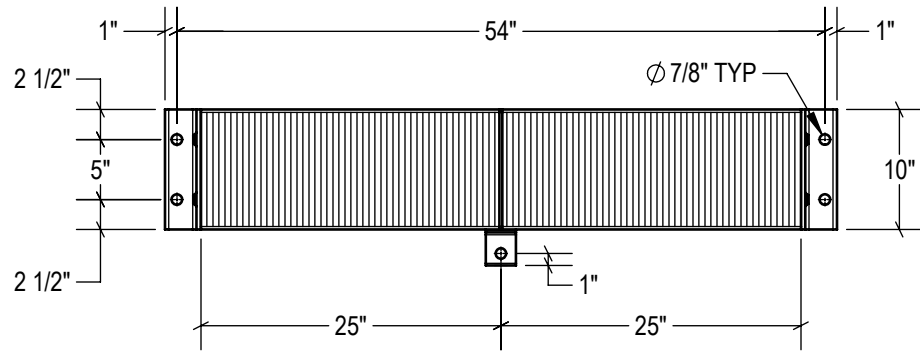


P2 CONFIG.
 model #: LB410-054/P2
 part #: 24-1061
 Welded (2) Sides

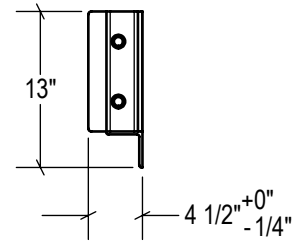
P1 CONFIG.
 model #: LB410-054/P1
 part #: 24-1060
 Welded (1) Side

STANDARD
 model #: LB410-054
 part #: 24-1059
 Bolted (2) Sides

TOP VIEW

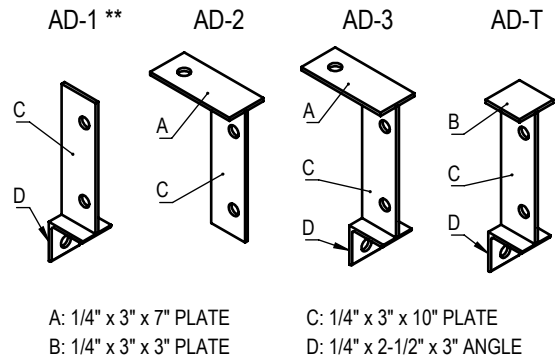


FRONT VIEW



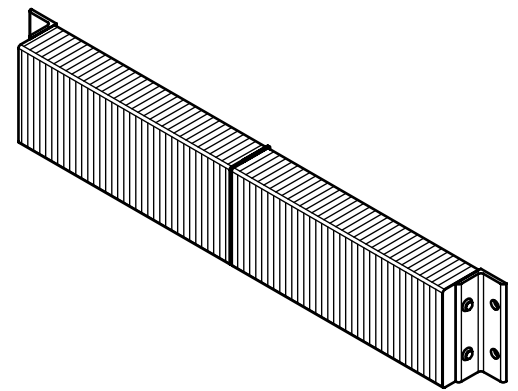
SIDE VIEW

ANCHORAGE DEVICES *



A: 1/4" x 3" x 7" PLATE
 B: 1/4" x 3" x 3" PLATE
 C: 1/4" x 3" x 10" PLATE
 D: 1/4" x 2-1/2" x 3" ANGLE

* NUMBER OF ANCHORAGE DEVICES REQUIRED = 1
 ** AD-1 STYLE USED UNLESS OTHERWISE SPECIFIED



ESTIMATED GROSS SHIPPING WEIGHT = 110 LBS

SPECIFICATIONS:
 FURNISH AND INSTALL LAMINATED RUBBER DOCK BUMPERS AS MANUFACTURED BY IDEAL WAREHOUSE INNOVATIONS, INC. LAMINATED PADS SHALL BE MADE FROM REINFORCED TRUCK TIRES CUT TO 4.125" x 10" PUNCHED AND ASSEMBLED THROUGH 3/4" RODS BETWEEN 3" x 3" x 3/8" STRUCTURAL STEEL UNDER 1,500LBS OF PRESSURE. FINISH OF EXPOSED METAL SHALL BE PAINTED WITH WATER-BASED AND LEAD-FREE PAINT OR HOT-DIPPED GALVANIZED (OPTIONAL).

ALL DIMENSIONS ARE ±1/8" UNLESS SPECIFIED OTHERWISE

DRAWN BY: T.CHUNG
DATE: 2018-12-19

CHECKED BY:
DATE:

THE INFORMATION CONTAINED IN THIS DRAWING IS THE SOLE PROPERTY OF IDEAL WAREHOUSE INNOVATIONS INC. ANY REPRODUCTION IN PART OR AS A WHOLE IS PROHIBITED.

3rd Angle	SIZE: A		
	DESCRIPTION: LAMINATED RUBBER BUMPER LB410-054		
SCALE: 1:16	SHEETS: 1 of 1	DRAWING NUMBER: MKT_LB410-054	REV: 1a