



**IDEAL WAREHOUSE
INNOVATIONS INC.**

Protecting Your People

TRAILER STANDS



From the Leaders in Trailer Collapse Prevention

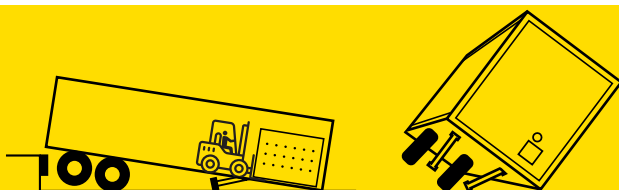
WHAT'S THE RISK?

When docked trailers are 'spotted' on landing gear, for loading and unloading, there is a risk of trailer collapse. Whether caused by an unbalanced load in the trailer, or due to the failure of aging landing gear, when an up-to 80,000 lbs trailer collapses, it can result in devastating situations for forklift drivers caught within, or workers nearby.

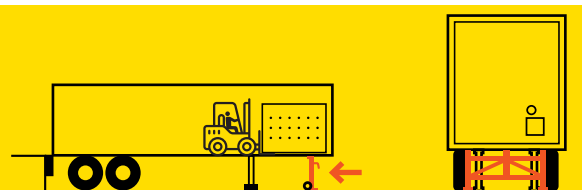
In a trailer collapse, the first concern is for workers, as serious injury or tragedy are real possibilities. But there are other business realities involved too. A collapsed trailer will close one dock position, but a domino effect can extend the problem from dock to dock. And damage to trailers, loading docks, dock equipment, forklifts, and cargo are all likely, and costly, outcomes.

THE SIMPLE (IDEAL) SOLUTION

When the cab disengages from the trailer, the primary source of support is withdrawn and the risk of collapse is created. The simple solution is to replace the missing support at the trailer's nose. Engineered and stress-tested for strength, Ideal Warehouse Innovations' lineup of Trailer Stands and Supports offer a range of simple solutions that can be easily and efficiently deployed under a trailer's front end, to help prevent mishap and tragedy.



Landing gear collapse and trailer rollover put workers and facilities at risk.



A trailer stand can save lives, prevent injury, and avoid damage.

DIFFERENT STANDS FOR DIFFERENT DOCKS

TRAILER STAND CONSIDERATIONS

What's best for the low-traffic dock?

If trailers are only infrequently spotted for loading, and truck traffic is minimal, a manually deployed trailer stand can be the perfect solution. Consider our ergonomic, back-saving AutoStand Plus.

How heavy is heavy-duty?

While all our trailer stands and supports are rated and drop-tested with an overloaded 100,000-lb trailer, there is some simple physics that applies if you're looking for a heavy-duty solution. Extra-wide support helps eliminate the risk of trailer collapse created by forklifts moving in a side-to-side rocking motion. And the large contact area creates a more stable base. Take a look at our AutoStand Wide or Shutable Trailer Stand options.



NO BOOTS ON THE GROUND®

In a busy loading dock, with a constant rush-hour of trailers coming and going and blind spots around every corner, workers in the dock approach (to deploy a trailer stand, say) are at great risk.

Ideal Warehouse Innovations were approached by a customer, who, after a tragic accident and too many near misses, was adopting a no foot-traffic in the dock policy. Their story inspired our innovations team to create our **No Boots on the Ground®** product line. Our new trailer collapse prevention solutions can be deployed without setting foot in the dockyard, thus keeping workers out of harm's way.

Have a look at our **Shutable Trailer Stands** and our automated **Ground Mounted Trailer Support**.



WELCOME TO THE DOCK OF THE FUTURE.

The fully automated loading dock is getting closer every day. For a glimpse of what trailer collapse prevention looks like in an automated environment, check out our permanently positioned, remote-operated Ground Mounted Trailer Support.



MEET OUR TRAILER STAND FAMILY

SIMPLE, STRONG & DEPENDABLE



WHITE PAPER DOWNLOAD

MANUALLY DEPLOYED STANDS

Our traditional Trailer Stands.



AUTOSTAND PLUS & AUTOSTAND
Strong support. Simply.

Extra-wide, extra-easy support.



AUTOSTAND WIDE
Quick-to-position, ergonomic, and strong.

For light-traffic docks.



TWO-POST TRAILER STAND
Strong, economical support.

NO BOOTS ON THE GROUND® TRAILER STANDS

Shunt-truck deployed. No delay!



SHUNTABLE 1.0
Our No Boots on the Ground® safety solution.

Stores easily.



SHUNTABLE 2.0
Our easy-to-store, No Boots on the Ground® option.

Push-button-easy.



GROUND MOUNTED TRAILER SUPPORT*
The ultimate. Push-button-easy.

Manage your dock efficiency with just the right trailer stand for your needs.

KEY ISSUE CONSIDERATIONS	MANUAL SOLUTIONS				NO BOOTS ON THE GROUND® SOLUTIONS		
	AutoStand Wide	AutoStand Plus	AutoStand	Two-Post	Ground Mounted	Shutable 2.0	Shutable 1.0
Prevents trailer collapse	✓	✓	✓	✓	✓	✓	✓
Autonomous vehicle ready	✗	✗	✗	✗	✓	✗	✗
No Boots on the Ground® complete safety	✗	✗	✗	✗	✓	✓	✓
Safest side to side full-load support	✓	✗	✗	✓	✓	✓	✓
Ergonomic, "no-crank", stress-free design	✓	✓	✗	✗	✓	✓	✓
Satisfies OSHA regulation: 1910.178(k)(3)*	✓	✓	✓	✓	✓	✓	✓
Labor to deploy	Medium	Medium	High	High	None	Medium	Medium

* Fixed jacks may be necessary to support a semitrailer and prevent upending during loading or unloading when the trailer is not coupled to a tractor.

GROUND MOUNTED TRAILER SUPPORT



BE READY FOR THE AUTONOMOUS VEHICLE DOCK OF THE FUTURE

The permanently positioned, No Boots on the Ground® trailer support. (Of the future!)

Among the most dangerous areas in the workplace, the loading dock is evolving with automated systems and solutions for efficiency and safety.

A major safety policy upgrade, being implemented at many organizations, is to eliminate foot traffic in the busy and hazardous loading dock approach. The Ground Mounted Trailer Support (GMTS), featuring loading-dock-of-the-future automation, offers an extraordinary solution.

Trailer stands, so important in the prevention of trailer collapse, typically require a worker in the dock approach to deploy/retrieve the device.

The GMTS's innovative design has the unit permanently positioned in the dock approach, in a retracted state. Like a low-profile speed bump, the incoming trailer passes over the retracted device. When the cab detaches and departs, with a push of a button from inside the dock, the GMTS rises to meet the underside of the trailer in a matter of seconds.



A fully-automated, heavy-duty option for busy loading dock environments.



**SIMPLY INSTALLED,
PERMANENTLY POSITIONED**



**SELF-ADJUSTING
TO ANY TRAILER HEIGHT**



**PUSH-BUTTON
OPERATION**

SHUNTABLE TRAILER STANDS



OUR HEAVY-DUTY, NO BOOTS ON THE GROUND® TRAILER STANDS

The Shutable Trailer Stand is a heavy-duty option for busy loading dock environments.

The loading dock approach is a dangerous place for workers on foot. The Shutable Trailer Stands are an Ideal Warehouse Innovations' No Boots on the Ground® product designed to help keep dockworkers out of harm's way.

Deployed by shunt truck, **Shutable 1.0** ergonomic stand is a completely hands-free solution, meaning there's no lugging or stress on a worker in the dock.

The Shutable Trailer Stand 2.0 is an extra-wide stand to provide important side-to-side support. The stand is positioned by the yard jockey (or shunt truck) fitted with a lifting device that is used to deploy the stand quickly and efficiently. One lifting device can deploy many stands across multiple dock positions.

The 2.0 is differentiated from the original Shutable stand by the fact it is more efficiently carried on the front of the shunt truck and is forwarded into its dock position. The 2.0 will also result in significant savings when several units are involved, and the compact footprint allows for convenient storage in the gap between dock positions.

SHUNTABLE 1.0



SHUNTABLE 2.0



Able to support the heaviest of trailers in high-traffic dock environments, the easy-to-deploy Shutable Trailer Stand is a heavy-duty safety solution.

SHUNTABLE 1.0



POSITIONED IN SECONDS BY SHUNT TRUCK



KEEPS WORKERS OUT OF HARM'S WAY



OUR STRONGEST, SAFEST SUPPORT ON THE DOCK

SHUNTABLE 2.0



STORES EASILY BETWEEN DOCK POSITIONS



POSITIONED BY THE YARD JOCKEY



STEPPED, EXTRA-WIDE DESIGN

AUTOSTAND WIDE

OUR MOST EFFICIENT AND STURDY MANUAL TRAILER STAND

Quick-to-position, ergonomic, and strong.

No cranking, no back-strain- the AutoStand Wide (ASW) is Ideal Warehouse Innovations' newest, strongest, and easiest manual trailer stand. Ergonomically designed and maneuverable, the ASW can be placed as easily as a shopping cart and then secured with a simple foot pedal.

The AutoStand Wide's extra-wide support covers two-thirds of the total trailer width and easily holds up to the heaviest of loads. It offers the ultimate protection from the side-to-side rocking of a trailer caused by heavy forklift activity that can lead to landing gear collapse or trailer tip-over.

It was this unique offering which earned the AutoStand Wide a finalist position in the MHI Innovation Awards 2021. A judging panel comprised of professionals from the material handling and supply chain industry whittled down a list of over 90 fantastic entries, to just a few finalists including the AutoStand Wide.



The AutoStand Wide is our finest manual stand yet!



EASY TO DEPLOY IN SECONDS



EXTRA-WIDE, HEAVY-DUTY SUPPORT



PROTECTS AGAINST SIDE-TO-SIDE ROCKING

*Time measured: Average time to bring stand from stored position to trailer nose; engage; disengage; and move back to stored position.

AUTOSTAND PLUS AND AUTOSTAND

TRIED, TESTED & TRUE: OUR TRADITIONAL TRAILER STANDS

Self-leveling and easy to deploy.

With their stable platforms and ergonomic design, Ideal Warehouse Innovations' **AutoStand Plus** and **AutoStand** are engineered to shoulder the weight and stresses of on/off loading in high-traffic loading dock environments.

Easy-to-deploy with a self-leveling gas-shock system and large all-terrain wheels, our AutoStands instantly create a stronger, safer loading environment. Both units lock with a security pin, but the **AutoStand Plus** integrates an easier and more ergonomically friendly lever system for faster usage.



AUTOSTAND



AUTOSTAND PLUS

Up to 100,000 lbs Static Load Capacity (45,359 kg)



ERGONOMIC & EASY TO OPERATE



PREVENT TRAILER UP-ENDING



PREVENT LANDING GEAR COLLAPSE

TWO-POST & RATCHET TOP TRAILER STAND

FOR LIGHT TRAFFIC DOCKS

TWO-POST TRAILER STAND

A great choice for light-traffic, budget-conscious docks

The Ideal Warehouse Innovations' exclusive **Two-Post Trailer Stand** does what no single post solution can do. With twin, weight-bearing posts; one positioned on either side of the trailer, the Two-Post Trailer Stand provides two-contact-point stability to protect against trailer tip-over and trailer up-ending.

Stowed on a sturdy transportation cart for easy deployment, the Two-Post Trailer Stand is built to last. However, because they require double deployment, our Two-Post Stand is best suited to lower-traffic loading docks.



FOR MAXIMUM STABILITY



EASY TRANSPORTATION CART



TWIN-SPIN LEVELLING SYSTEM

RATCHET TOP

The strongest maintenance jack around

The Ideal Warehouse Innovations' **Ratchet Top Maintenance Jack** is the answer to all your heavy-duty, trailer maintenance needs. Easy to position, with an efficient ratcheting mechanism, the Ratchet Top Maintenance Jack has you covered for any maintenance or tire-changing work throughout the day.



QUICK AND EASY MAINTENANCE SOLUTION



RATCHET MECHANISM LIFTING POWER



NOT TO BE USED AS TRAILER STAND



ALERT: It is dangerously common practice to use a trailer maintenance jack in lieu of a trailer stand. Jacks should only be used for the maintenance/tire change operations for which they are designed and rated and should never be used in place of a trailer stand.



**IDEAL WAREHOUSE
INNOVATIONS INC.**
Protecting Your People

Toll-Free Phone: **1-866-828-6737**
Toll-Free Fax: **1-844-899-0088**

IdealWarehouse.com
info@idealwarehouse.com

Trailer Stand products are protected by the following patents and many additional patent pending files: Ground Mounted Trailer Support 198750(CA), Shuntable Trailer Stand 1.0 11535315(US), AutoStand Plus: 8016257(US), 2608682(CA), Two-Post: 11225225(US), D883148(US), 1753008(CA), 182333(CA), 183548(CA), 451715(E.P).
Form [TrailerStand-EN-HI-IW-L-202305]